

Products > Ball Valve & Seat

Sapphire Ball Seat for Check Valve

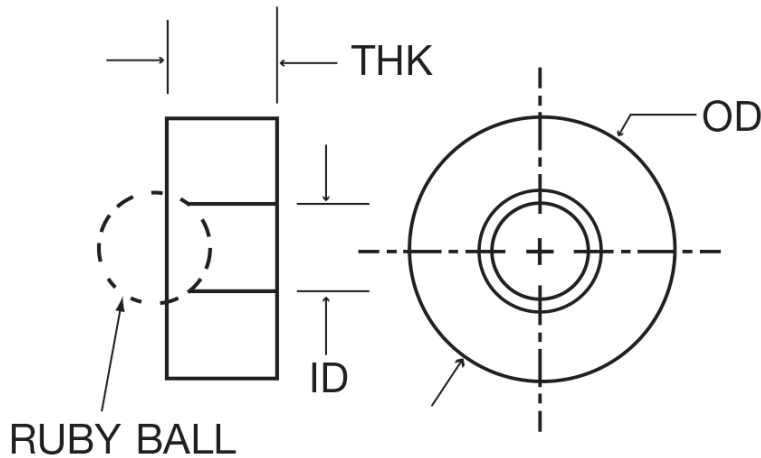
Sapphire Ball Seats are used as check valves in pumps. Using a Grade 5 sapphire or ruby ball in conjunction with the seat will provide a seal due to matching points of contact. Our stock sapphire seat matches with a 1/8" diameter ball (Model No. B3.18). Custom design is welcome.



Typical Applications: Liquid Chromatography, Flow Control

Model	Inside Diameter	Outside Diameter	Thickness	Ball Diameter
SP-140	.083/.087"	.1775/.1805"	.058/.062"	.1250"

Sapphire Ball Seat Cross-Section



NOT SEEING EXACTLY WHAT YOU NEED?

We specialize in creating a wide range of custom optical components and custom mechanical components including a variety of shapes - from internal holes and tapers to outer flanges, angles and surface finishes. Contact us (800-922-0118) and we will consult with you to create a custom component that meets all of your specifications.